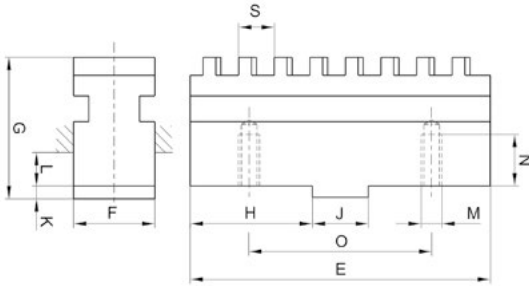




# DATI TECNICI GRIFFE BASE TECHNICAL DATA

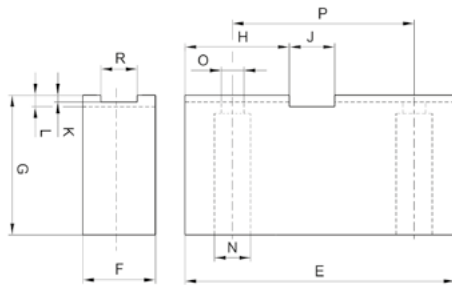
## DATI TECNICI TECHNICAL DATA

### GRIFFE BASE MASTER JAW



#### GRIFFA BASE PER IUS E IUG

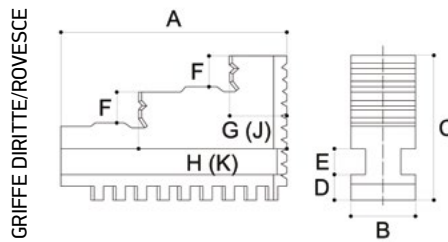
MM	E	F	G	H	J	K	L	M	N	O	S
100	43	14	25	16,5	10	3	5,3	M5	11	20	6
125	52	16	25	20	12	3	5,3	M5	10	28	6
160	64	18	26	26	12	3	4	M6	10	38	6
200	77	22	32	31,5	14	3	4	M10	15	48	8
250	101	25	32	43,5	14	3	4	M10	15	55	8
315	125	32	44	52,5	20	4	5	M12	18	60	10
400	150	32	48	65	20	4	5	M12	18	70	12
500	189	42	54	84,5	20	5	6	M16	20	90	12



#### BLOCCHETTO TENERO PER IUS E IUG

MM	E	F	G	H	J	K	L	N	O	P	R
100	50	20	20	20	10	3	6,5	10	5,3	20	14
125	60	22	30	24	12	3	6,5	10	5,3	28	16
160	75	23	36	31,5	12	3	6,5	11	6,4	38	18
200	95	28	40	40,5	14	3	6,5	18	10,5	48	22
250	120	32	40	53	14	3	6,5	18	10,5	55	25
315	140	42	52	60	20	4	8,5	20	13	60	32
400	165	42	70	72,5	20	4	8,5	20	13	70	32
500	205	55	80	92,5	20	4	9,5	26	17	90	42
500	188,5	42	95	17,3	15	20	55,5	125,5	63	133	12

### GRIFFE JAW



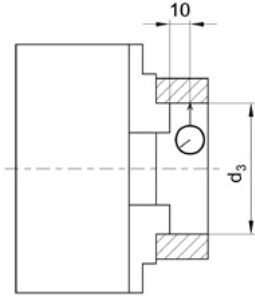
#### GRIFFE DIRITTE / ROVESCE

Ø	A	B	C	D	E	F	G	H	J	K	S
80	35,5	10	27	5,9	5	6	10,5	23	11	23,5	6
100	41,5	14	34	5,9	7	8	10,5	27,5	11	28	6
125	51,5	16	36	5,9	7	8	13,0	33,5	13,5	34	6
160	66,0	18	42	7,4	7	10	21,5	42	16	36,5	6
200	74,0	22	54	9,9	8	12	20,0	56	22	58	8
250	97,5	25	58	9,9	8	14	22,5	71,5	25	74	8
315	123,0	32	71	11,9	12	16	27,5	89,5	30,5	92,5	10
400	152,5	32	86	14,9	12	20	41,5	107,5	43	109	12
500	188,5	42	95	17,3	15	20	55,5	125,5	63	133	12

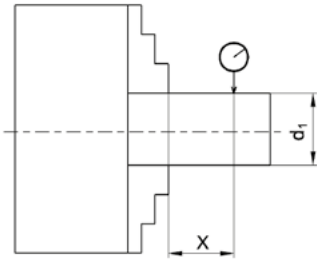


## DATI TECNICI TECHNICAL DATA

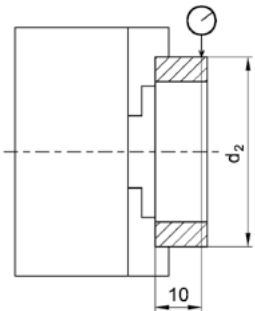
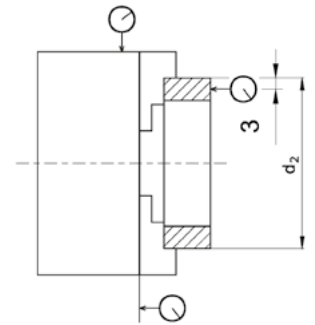
### PRECISIONE GEOMETRICA PER IUS IUG GEOMETRIC PRECISION



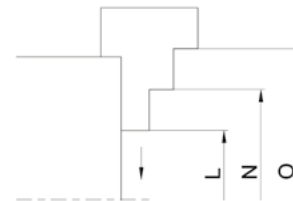
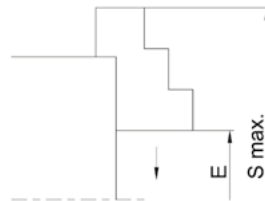
MM	TOS EXTRA	TOS STANDARD	MM	TOS EXTRA	TOS STANDARD
80	0.02	0.04	80	0.01	0.02
100	0.02	0.04	100	0.01	0.02
125	0.025	0.04	125	0.015	0.03
160	0.025	0.04	160	0.015	0.03
200	0.03	0.06	200	0.015	0.03
250	0.03	0.06	250	0.015	0.03
315	0.04	0.06	315	0.02	0.04
400	0.04	0.08	400	0.02	0.04
500	0.08	0.1	500	0.04	0.05



MM	X	D1	D1	D1	D2	D3
80	40	8	12	16	63	32
100	40	12	16	20	80	40
125	60	16	20	25	100	50
160	60	20	36	40	125	80
200	80	25	36	47	160	100
250	80	36	47	75	200	125
315	120	47	75	100	250	160
400	120	47	87	125	315	200
500	160	75	125	160	400	200



MM	RPM IUS	RPM IUG	GCM IUS	GCM IUG
80	6000	7000	1	1
100	5300	6300	3	2
125	4500	5500	5	4
160	3500	4500	11	8
200	3000	4000	25	19
250	2800	3500	45	35
315	1800	2500	133	90
400	1300	2000	330	208
500	-	1500	-	504



### AREA DEL DIAMETRO DI SERRAGGIO PER TIPO IUS, IUG ED IUG EXTRA

DIAMETRO MM	E	G	H	L	N	O	S-MAX
80	3-27	23-48	48-73	3-27	27-51	52-76	98
100	3-39	24-60	58-94	3-39	30-66	64-100	122
125	3-49	30-75	70-116	3-49	38-84	83-125	152
160	3-76	46-119	87-160	3-76	50-123	91-164	208
200	5-88	56-140	116-200	5-88	57-140	117-200	246
250	5-107	68-162	156-250	5-107	66-168	154-256	314
315	8-136	74-201	188-315	8-131	79-207	193-231	392
400	10-187	90-268	223-400	10-187	9-274	224-406	498
500	25-250	135-360	275-500	25-250	135-360	275-500	626